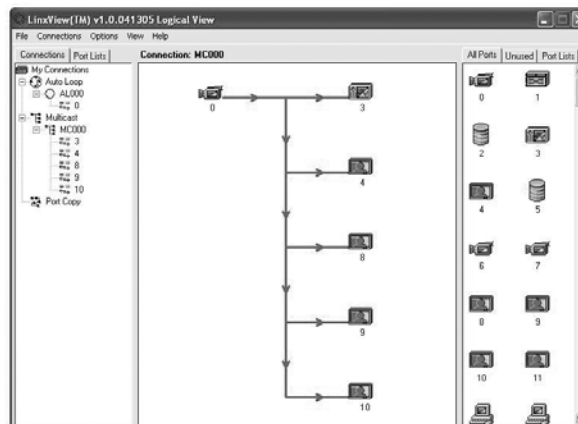


LinView™ Physical View



LinView™ Logical View

### LinView Software for Optilinx™ OLX-3000 Switch Mainframe

The LinView™ Software greatly simplifies configuration management. Configurations can be saved and restored with ease. LinView™ also provides the user with real-time monitoring of the unit's chassis and port cards.

### System Design

In the Physical View, the user can view and control all port connections on the switch. The user can also highlight connections by right-clicking on a given port. In the Logical View, the user is presented with a highly intuitive Windows Explorer-like interface for creating and managing configurations. Drag & drop functionality makes topology changes a breeze. Configurations can be made, viewed, and saved offline without affecting the switch.

LinView™ allows the user to monitor the health of the switch chassis and port cards. For the chassis; temperature readings are available for the crosspoint, backplane, and controller card.

Fan speeds are available as well. Historical data is also logged on a chart, allowing the user to determine the switch state during a specified period of time. For the port cards, the temperature and historical charts are similarly available. Other vital switch statistics are saved and available for review.

A Command Line Interface is also available. After logging into the switch via Telnet or SSH session, you can issue simple commands to change topology, emulate faults, and acquire unit health and status information. CLI commands are sent via a 10/100 Ethernet connection or an RS232 connection.

The entire CLI instruction manual is built into every switch - just type 'h' for help.

### Features

- Real Time Switch Status and Control
- Offline Drag and Drop Topologies Changes
- Unit Health Monitoring Made Easy
- Command Line Interface
- Change Topologies
- Autoloop
- Port Copy
- Multicast
- Emulate Faults
- Health and Status Information